



THE
YEATMAN
OPORTO





Porto

Porto, UNESCO World Heritage site, the second-largest city in Portugal, is known for its stunning riverside views, historic architecture, and vibrant culture.

The iconic Dom Luís I Bridge spans the Douro River, connecting the city to Vila Nova de Gaia, famous for its port wine cellars.



Aegean Airlines AEGEAN	Air Baltic Corp. airBaltic	Air Europa AirEuropa	Air France AIRFRANCE
Air Serbia AirSERBIA	Air Transat Air transat	Austrian Austrian	Azores Airlines sata azORES Airlines
British Airways BRITISH AIRWAYS	Brussels Airlines brussels AIRLINES	EasyJet Airlines easyJet	Eurowings Eurowings
Iberia IBERIA	Jet2.com Jet2.com Friendly low fares	KLM KLM	Lufthansa Lufthansa
Luxair Luxair	Norwegian norwegian.com	Play PLAY	Royal Air Maroc الخطوط الملكية المغربية royair maroc
Ryanair RYANAIR	SAS Scandinavian SAS	Sun d'Or International Airlines Sundor	Swiss International SWISS
TAP Portugal TAP AIRPORTAL	Transavia transavia	Turkish Airlines TURKISH AIRLINES	United Airlines UNITED
Volotea VOLOTEA	Vueling Airlines vueling	Wizz Air Hungary Wizz	





The Yeatman

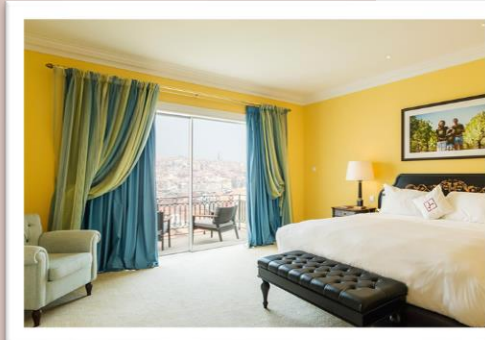
- 109 Rooms & Suites
 - Executive | Superior | Superior Deluxe | Suites | Master Suites | The Artist Suite | Bacchus Suite | Presidential Suite
 - All the rooms with terrace and view over the city
- F&B
 - 2 restaurants:
 - Orangerie Restaurant
 - Gastronomic Restaurant - 2 Michelin Stars
 - Dick's Bar
 - Pool Bar
 - Wine Cellar with several events
 - Masterclasses & Wine Tastings
 - Wine Dinners
- Wine Spa
- Shop
- 13 Event Rooms
- Outdoor & Indoor Infinity Pools





Rooms & Suites

Rooms & Suites



32 Executive



32 Superior



45 Superior Deluxe



4 Suite



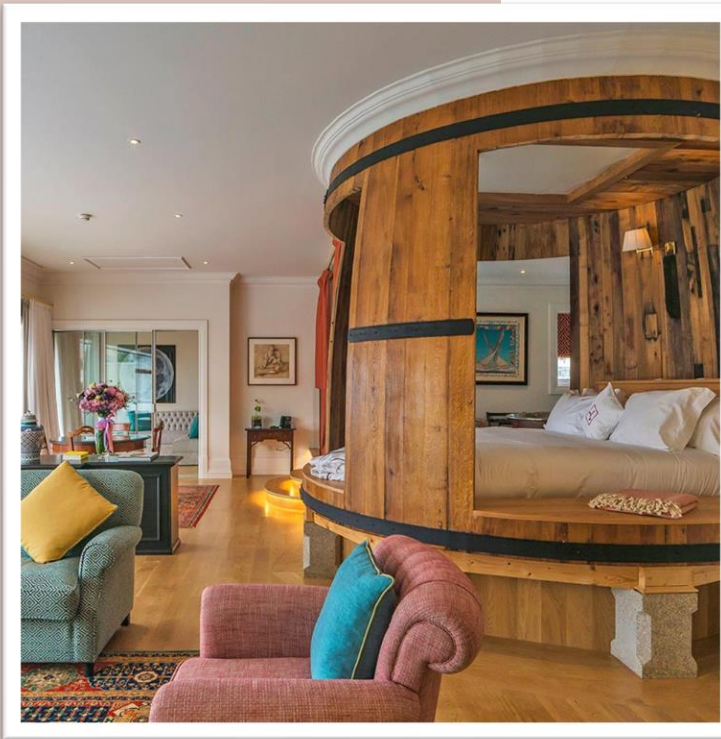
10 Suite Deluxe



3 Master Suite



Iconic Suites



Presidential



The Artist



Bacchus





F&B



Gastronomic Restaurant

Chef Ricardo Costa | 2 Michelin Stars | 'Rising Chef' trophy by Relais & Châteaux





Wine Cellar

38.000 bottles & more than 1.000 wine references





Orangerie Restaurant





Dick's Bar





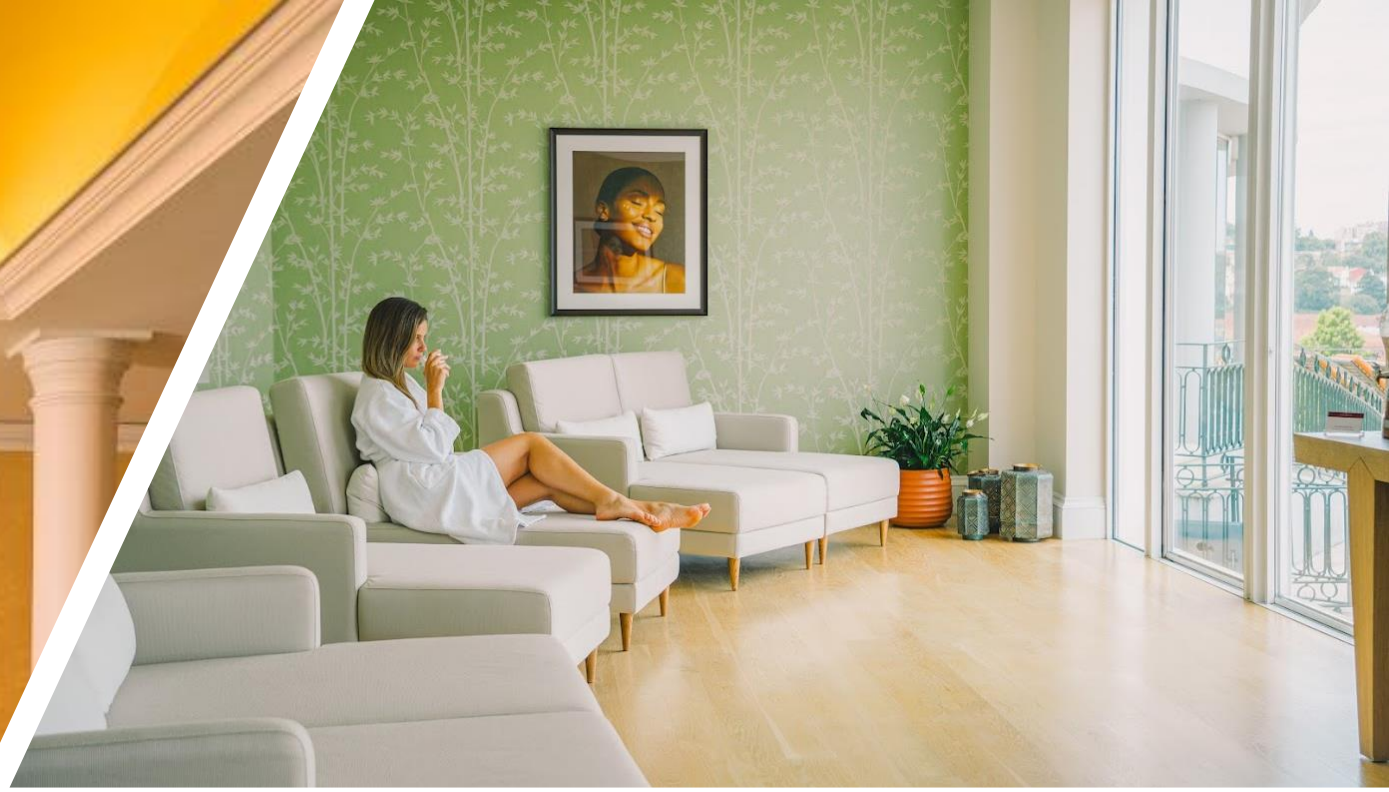
Wine Spa

Wine Spa



- 22.000 sq ft area
- 10 treatment rooms
- Massages
- Facial Treatments
- Scrubs
- Wraps
- Barrel Bath Experience








Meetings & Events









Rooms Capacities	Width x Length (m)	Area (m ²)							
			Conference	Class	U	Cocktail	Menu	Buffet	Cabaret
Minho	7 x 6	42	26	24	18	30	24	-	16
Dão	9 x 6	54	38	30	28	40	32	20	32
Madeira	8,8 x 6	53	38	30	18	40	32	20	32
Bairrada	9,6 x 9,6	90*	90	48	33	80	60	40	48
Alentejo	13 x 9,6	105*	120	78	39	120	100	80	54
Madeira + Bairrada	-	143*	112	80	39	160	112	90	96
Bairrada + Alentejo	22,5 x 9,5	195*	190	130	54	270	160	130	140
Madeira + Bairrada + Alentejo	-	246*	-	-	-	350	192	170	180
Porto	10,3 x 9,7	100	90	54	33	100	80	50	48
Douro	6,7 x 9,7	65	70	36	24	50	32	20	32
Porto + Douro	17 x 9,7	165	180	112	48	180	120	80	100
Vaulted	6,7 x 12,7	85*	60	44	27	60	60	-	32
The Orangerie	18,5 x 12,3	244*	-	-	-	200	160	80	100
Jardim de Inverno	-	156	-	-	-	100	80	50	56
Vaulted + The Orangerie	-	329	-	-	-	250	240	120	130
The Orangerie + Vaulted + Jardim de Inverno	-	457*	-	-	-	300	300	180	190
Private Dining	3,7 x 5,4	20	16	9	9	15	18	-	8
Tented	9,7 x 10	97	-	-	-	100	72	50	44
Açores	18,3 x 8,9	180*	180	112	48	180	120	100	100





MICHELIN STAR

Chef Ricardo Costa

Gastronomic Restaurant

Since 2017

The Yeatman Awards





Teresa Ramalho – Global Sales

Email: teresa.ramalho@theyeatman.com

Phone: +351 932 602 816 | +351 220 133 100

Ancy Robertson – Senior Sales Executive

Email: ancy.robertson@theyeatman.com

Phone: +351 962 023 080 | +351 220 133 100

